

5-15-1888







6-118

85-15-1848



6-160

55-15-1848





B-101

58-15-1048

6-103

58-15-1882













9
1
2
3
4
5
6
7
8
9
10
11
12
13
14
15
16
17
18
19
20
21
22
23
24
25
26
27
28
29
30
31
32
33
34
35
36
37
38
39
40
41
42
43
44
45
46
47
48
49
50
51
52
53
54
55
56
57
58
59
60
61
62
63
64
65
66
67
68
69
70
71
72
73
74
75
76
77
78
79
80
81
82
83
84
85
86
87
88
89
90
91
92
93
94
95
96
97
98
99
100



6-120

841-51-85





8-11-1928



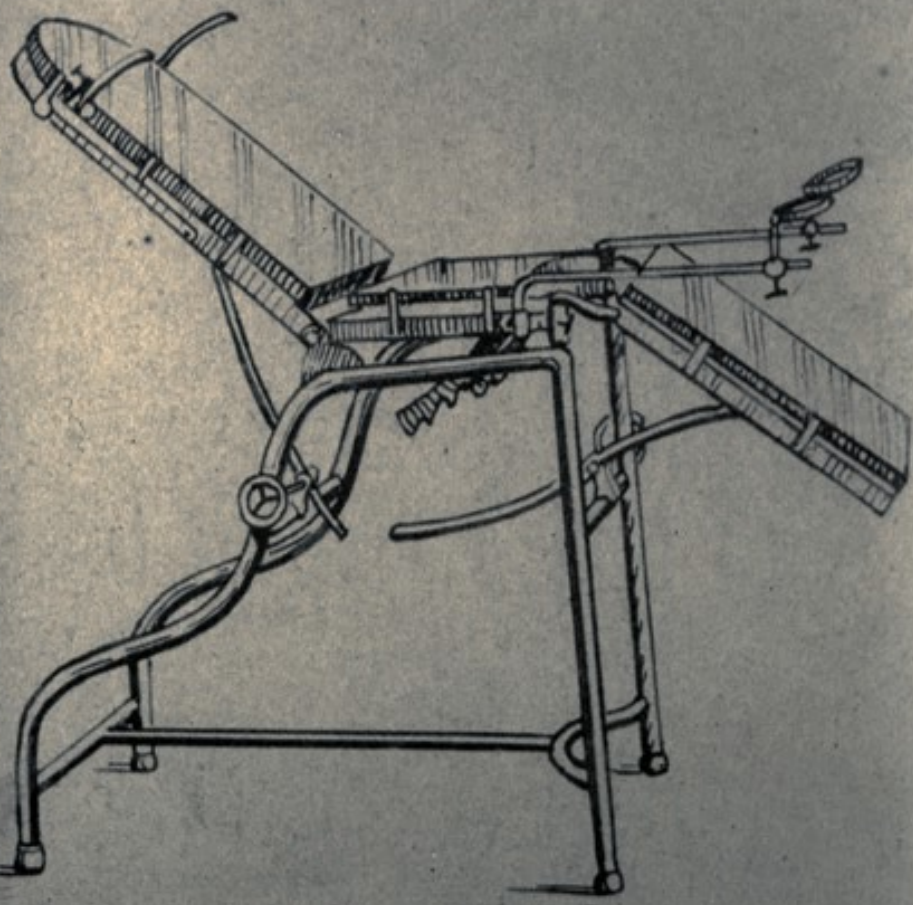


B-113

20-15-1948

6-12-1

70-15-1878



70022

pa.



70024

30-15-118

5-113



6-14c

2-1-1848



6-12X

3-1-1949











6-183

4-1-1846

6-183







4-1-1919

9-182



0201-12

0201-6









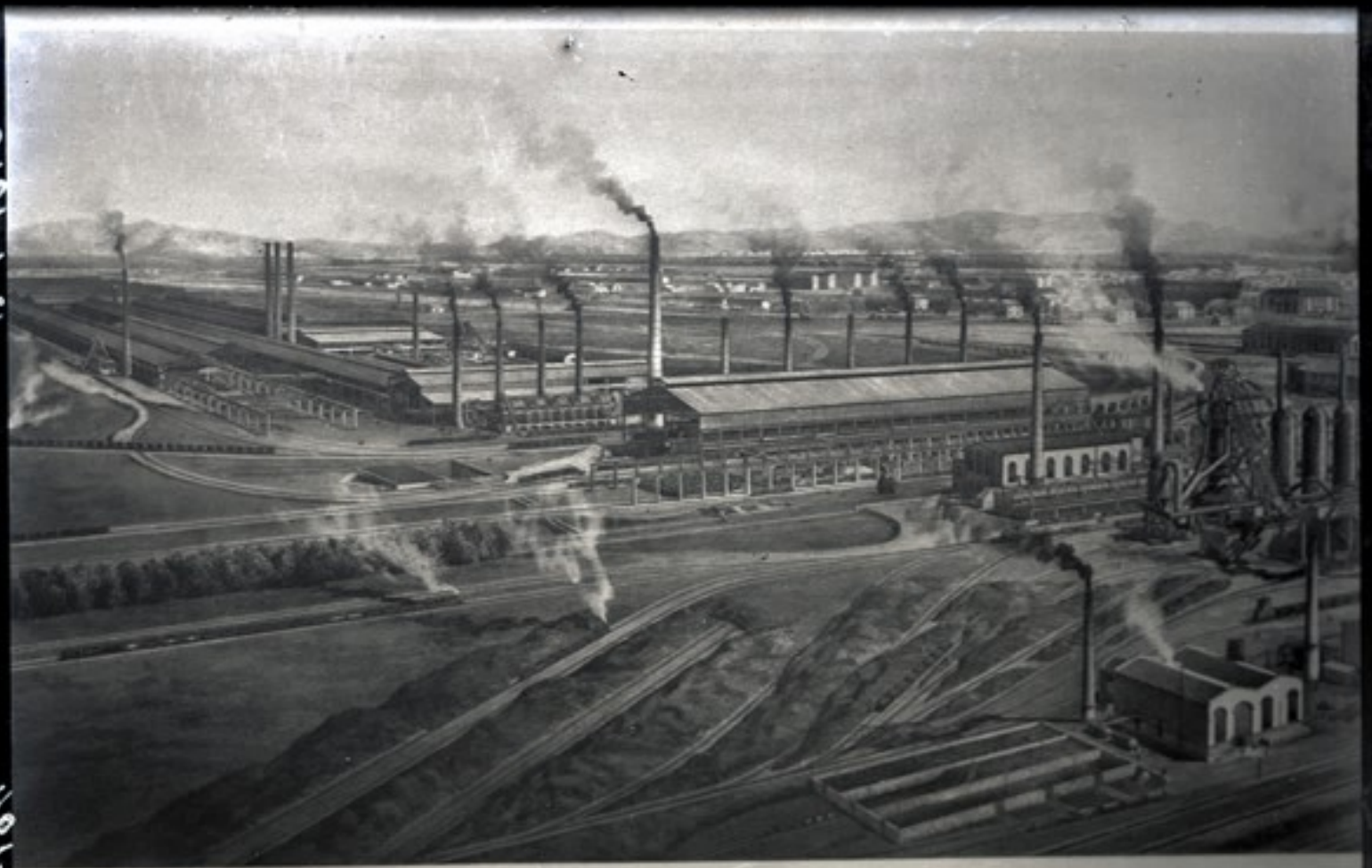




P-102

2/1/1918





COMPañIA SIDERÚRGICA



IRGICA DEL MEDITERRANEO SAGU

6-192

15-1-1928



ANEO SAGUNTO, ESPAÑA



6-142

15-1-1844





8-1-68

3-1-68











01-1-1-01

01-1-1-01



205-1-05

205-2





P-509

50-1-1048



D-50X

19-1-1940





P-508

SS-1-1846





B-541*

55-1-1848



6-5-15
1915

6-513

52-1-1876





0-511

2-1-1866







8-515

8-1-188

9291-1-95

815-9



58-1-1078



8461-1-25

055-9





9491-1-1E

155-9



21-1-184

6-555



6-553

3-5-1938









COMPANIA SIDERURGICA DEL MEDITERRANEO SAGUNTO. ESPAÑA



PHPI-5-1

— 555-9

858-

8-5-1072







6-531

10-5-1046





10-5-1040

0-553



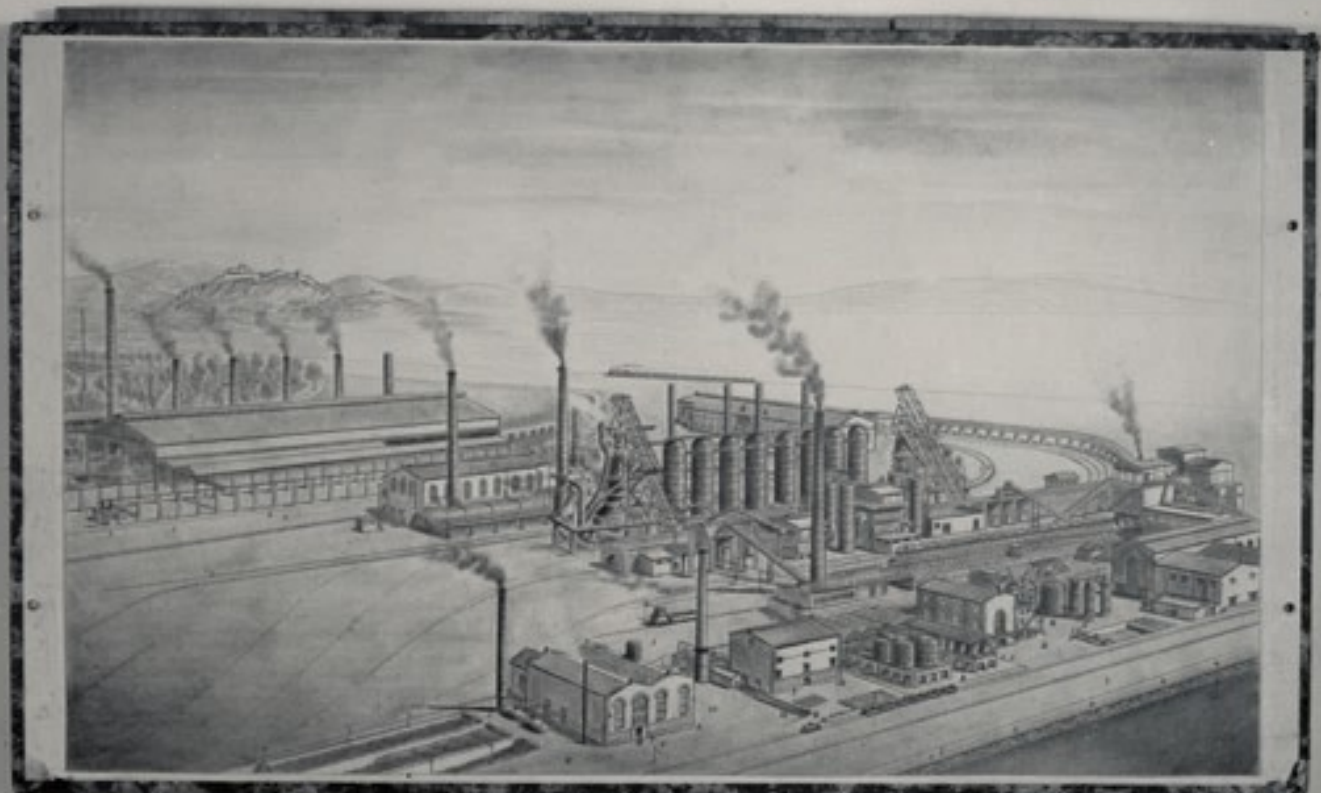


10
3
2
0



2491-6-21

755 0



PHPI-S-SI

225-9









9-5-40

54-5-1848



6-541

54-5-1948



6-5-45

P4P-144





9491-5-85

445-9



PP1-5-85

825-9











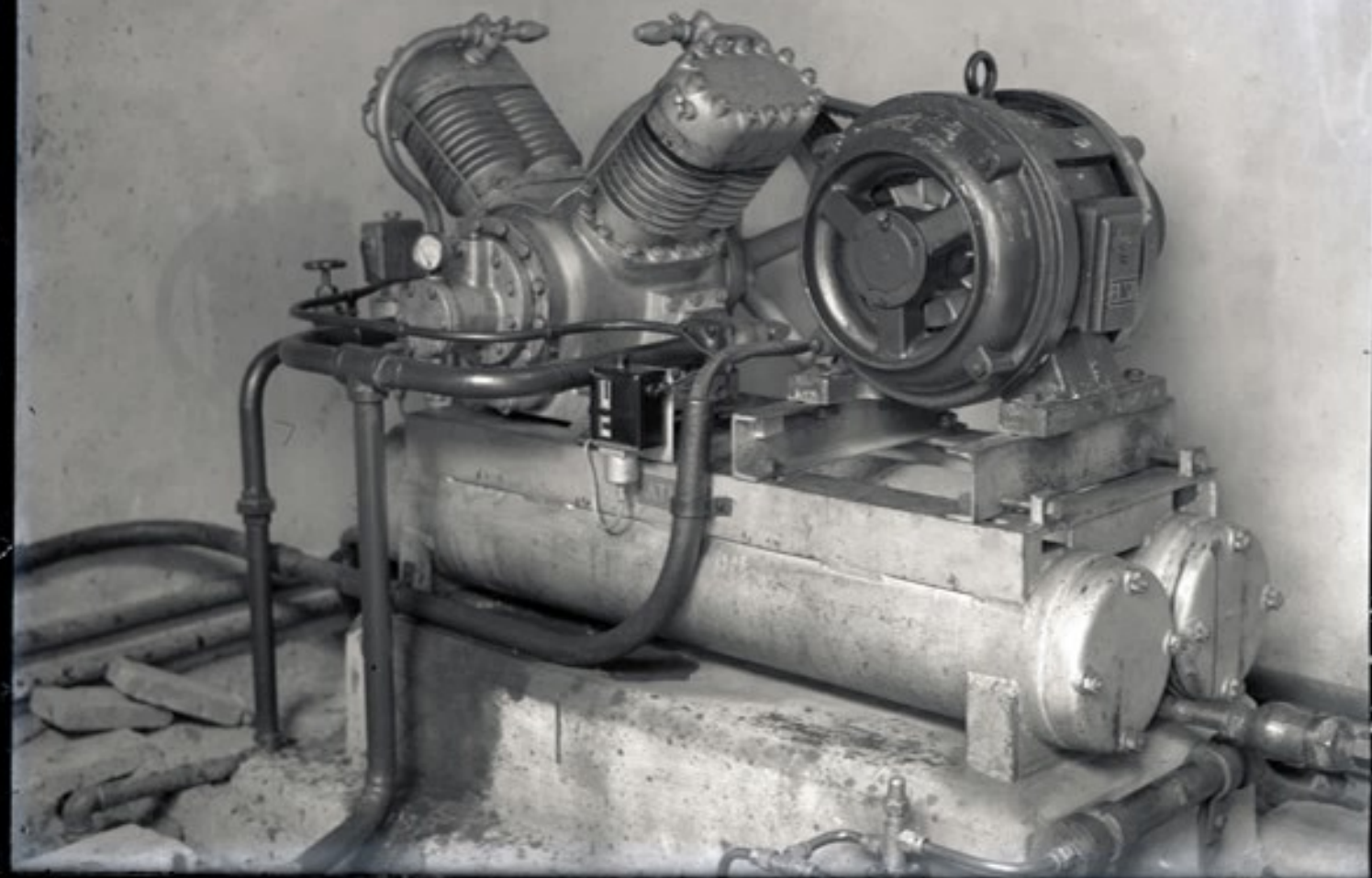




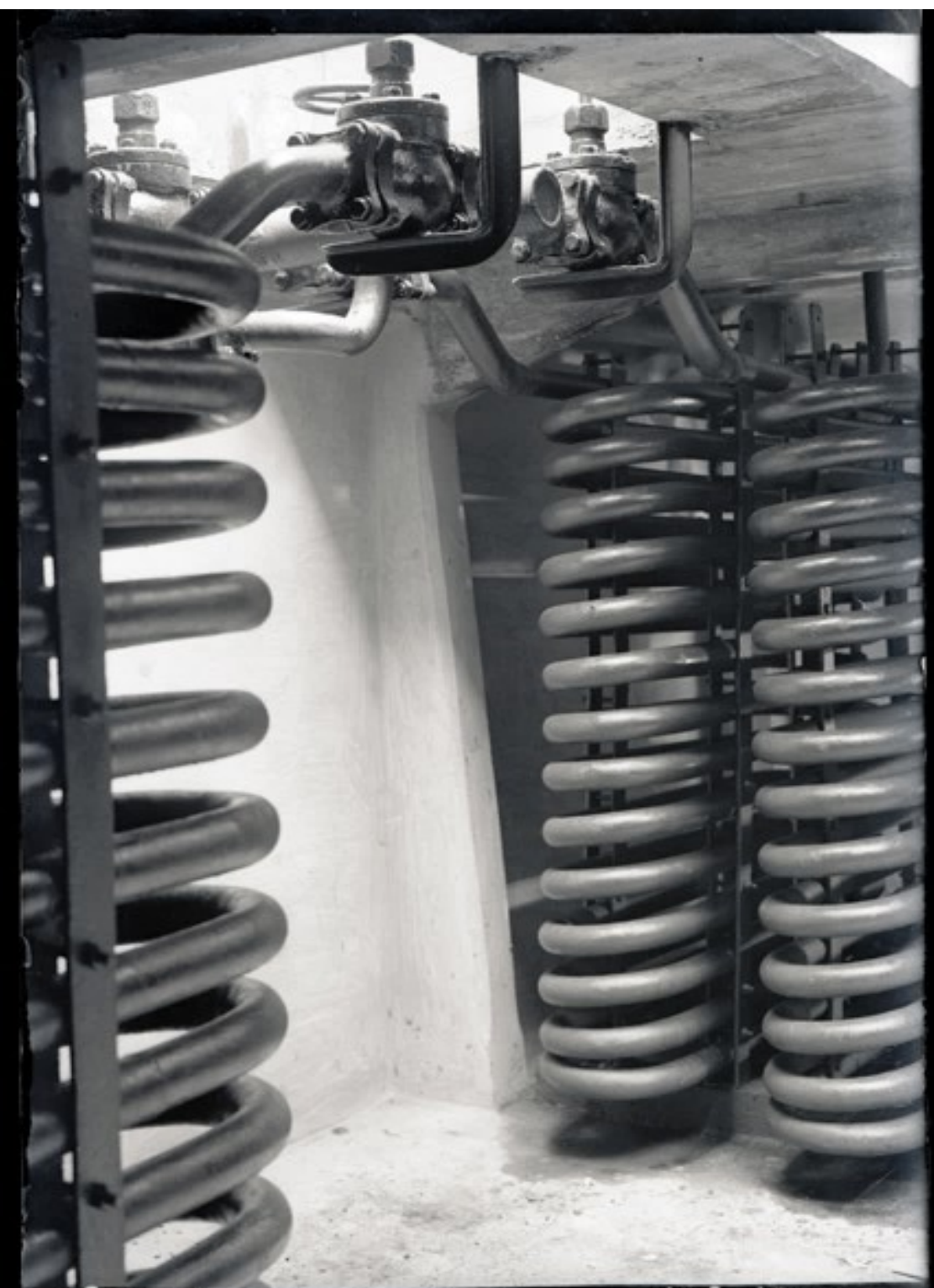








1-3-1922



P-288

17-3-1949



11-3-48

825-9

6-574

14-3-1916



6-590

12-5-1898





8-3-1888

11-3-1888



0-505
1-3-1918



0-5-23

31-5-1908



100

5-3-1918



0-5-2

11-3-18-6





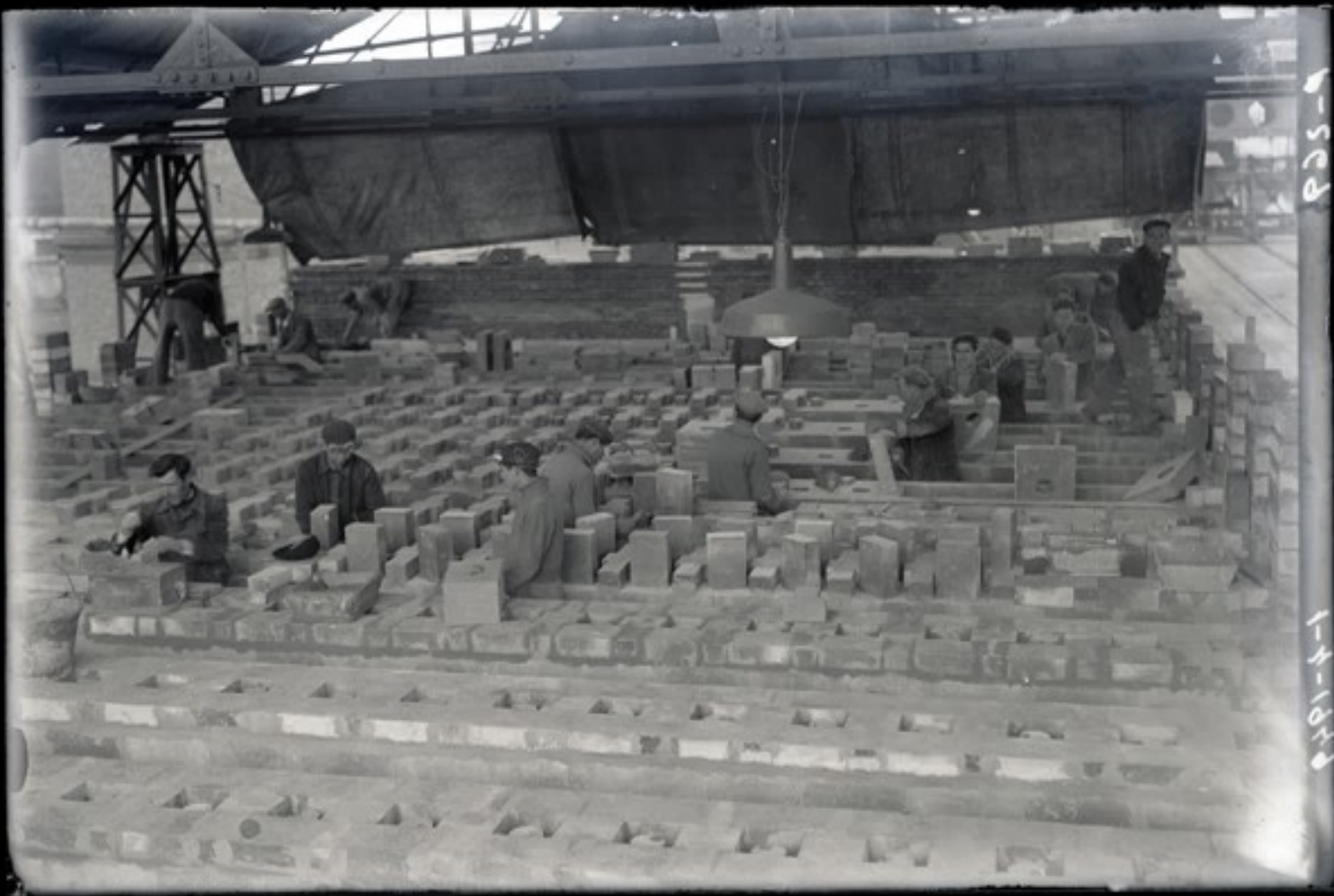
6-5-61

1-4-1948

8250

1-1-1048





1-4-1913

1-4-1913



6-520

7-1-1950

9291-4-4

195-9





6-545

1-1-1910



6-513

6-4-1942



PHOTO 100

100

9-8-1946

255-9





6-542

2-4-1949



8-1-1910

1-1-1910



6-528

2-4-1948



655-9

9481-7-4

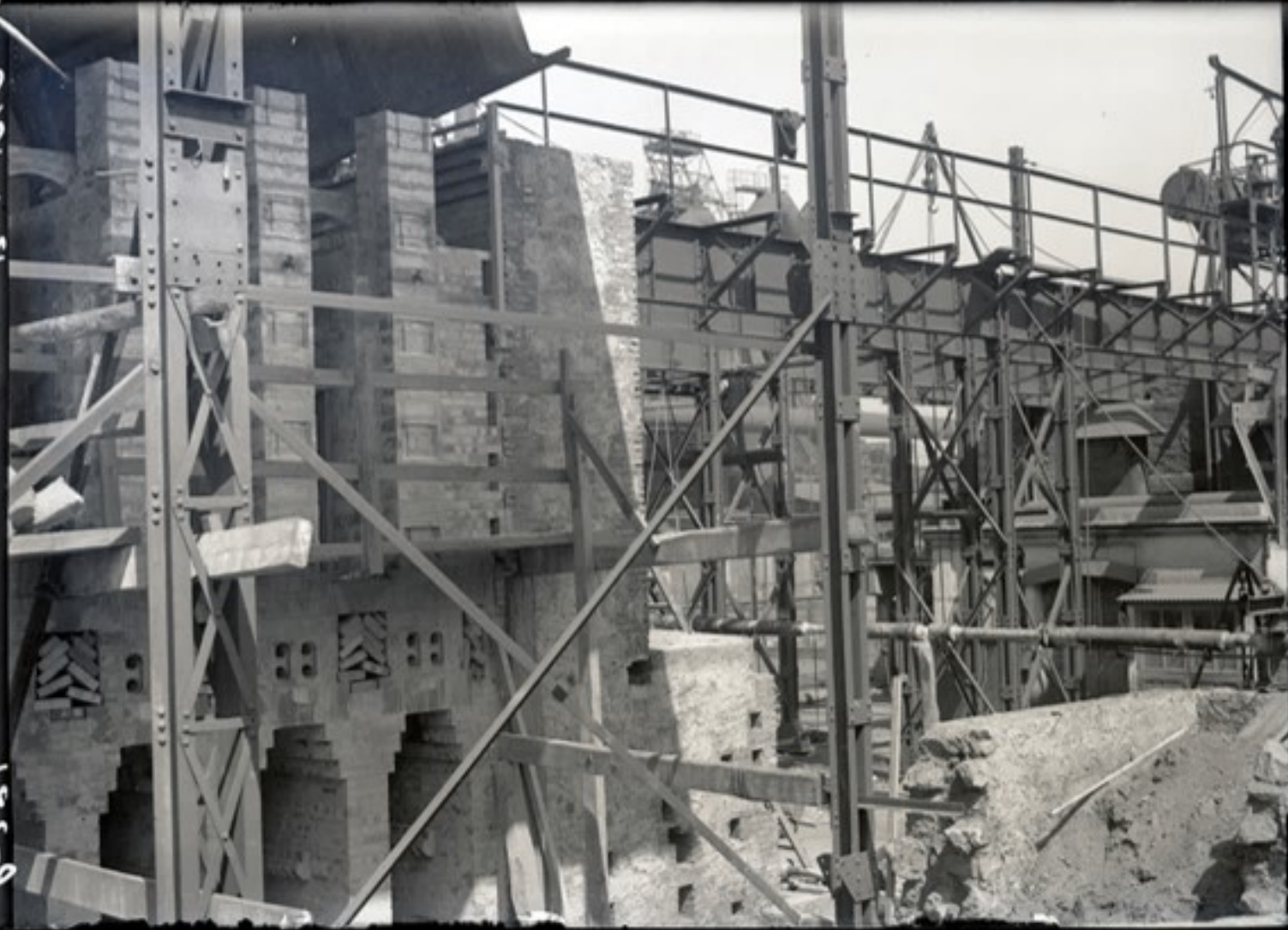


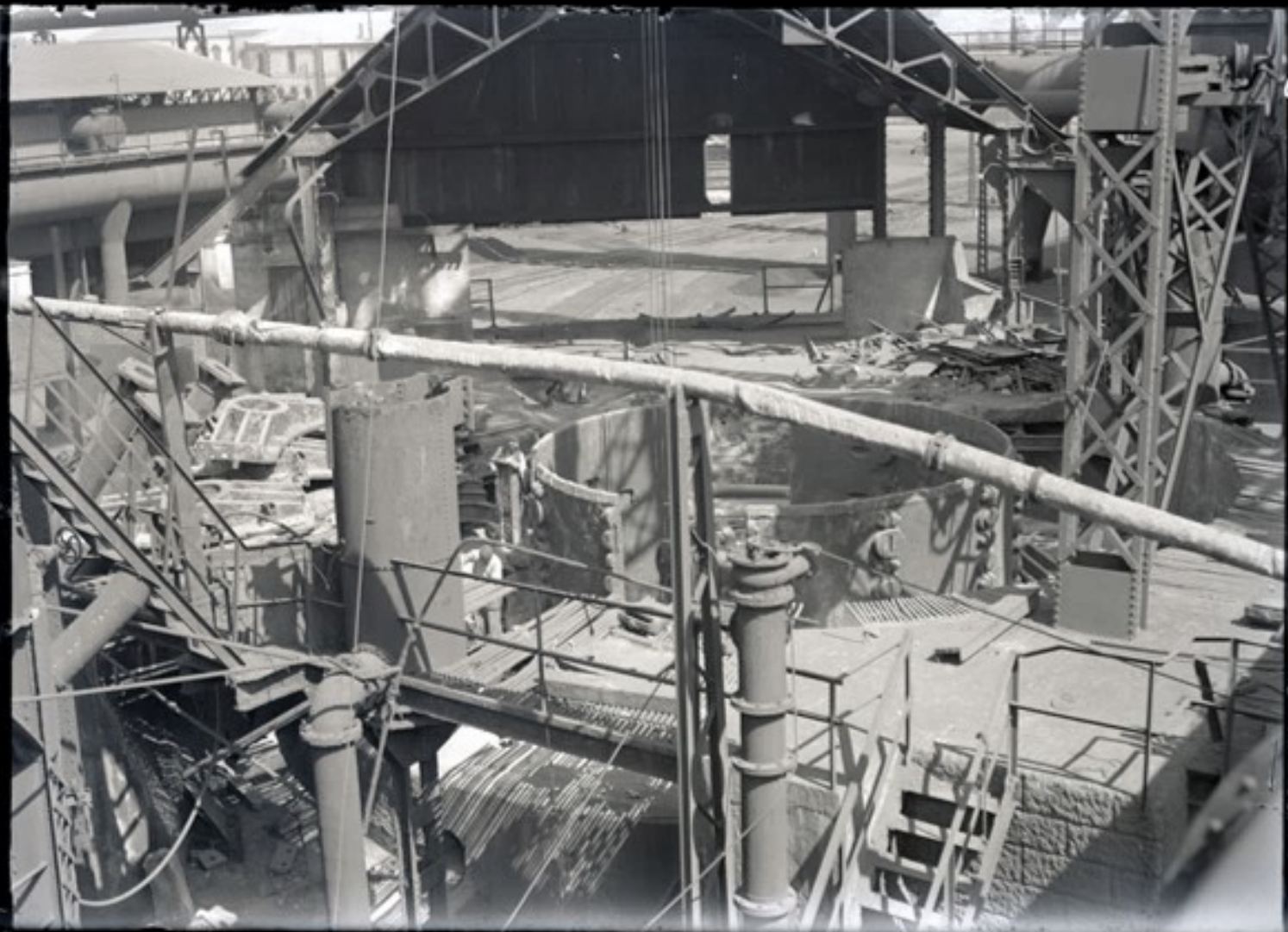
6-580

1-4-1940

6-581

13-4-1846





6-585

13-4-1948



D-583

13-2-1949



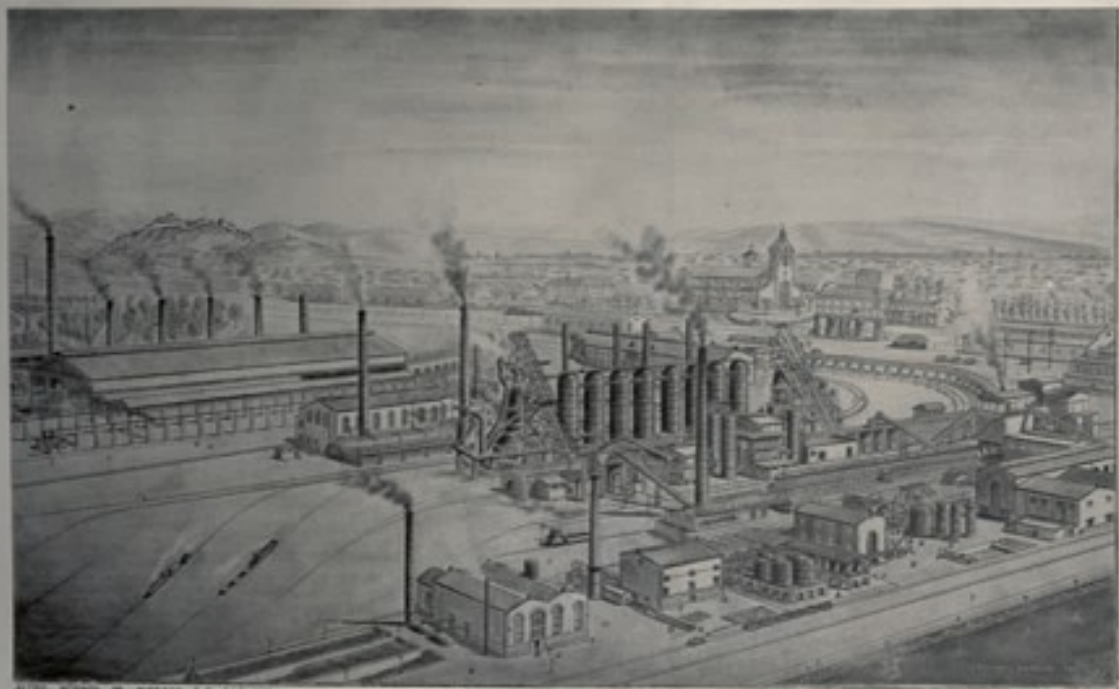
13-4-1944

9-584



6-542-582

13-2-1819



THE IRON WORKS OF PITTSBURGH, PA.

6-586

8-10-3

12-4-31

2559





6-588

1916



6-518

12-4-1919



6-5-60

13-2-1949



9591-2-15

505-9





918-4-15

6-5-63



195-6

SI-4-1819



U95-6

9491-2-11





B-528



11/1/1928



P-508

SP-4-1938



